



St Edward's
School

Unity • Achievement • Faith

VOL. 1 ISSUE 1 • FEBRUARY 2023

THE LIBRARY MONTHLY

Welcome!

Welcome to the first edition of The Library Monthly, St Edward's School library newsletter, here to keep you up to date with all things literary and library related!

This month..... Sign up for the Library Reading Challenge. How many books can you read between now and the summer holidays? Set yourself a target, pick up a bookmark from the library and get reading. There will be prizes and rewards for the books you read and recommendations you give!

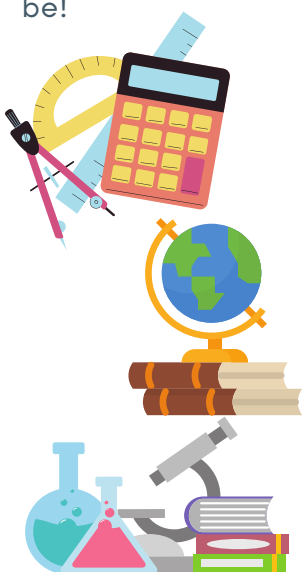
Blind date with a book!

With Valentine's day just around the corner have you thought about going on a blind date? With a book? In the library this month we have a selection of books which you can choose from; blind to what the cover looks like, what the blurb says or even what the title is, all you will be able to see are 3 words which describe what kind of book it is. Will you take the chance to discover what's inside? Maybe you will find a new author to favour or a new genre to fall in love with. Come and see who your new crush could be!



New non-fiction

Keep your eyes open in the library as it's all ready for a restock! Non-fiction titles to support subjects from Maths to Music, History to Health and Social Care are on their way and will be filling the shelves in no time at all. So if you need homework help or information inspiration then look no further than the school library, come in to take a look at what's on offer.



Dates to note this month:



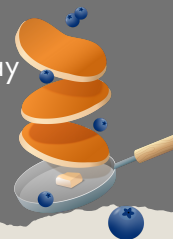
World Nutella Day
5th Feb

Children's Mental Health Week
6th - 12th Feb

Charles Dickens Day
7th Feb

St Valentine's Day
14th Feb

Pancake Day
21st Feb



Books of the Month

A Series of Unfortunate Events by Lemony Snicket

The unhappy tales of the Baudelaire children are at the heart of this series of books.

Orphaned and apparent magnets for misfortune these children encounter villains, fires, dangerous beasts and dastardly plots to steal their fortune through the 13 book series. Which will be your favourite and what will you discover along the way?



The library is open Monday to Friday break and lunchtimes and after school until 4:30pm